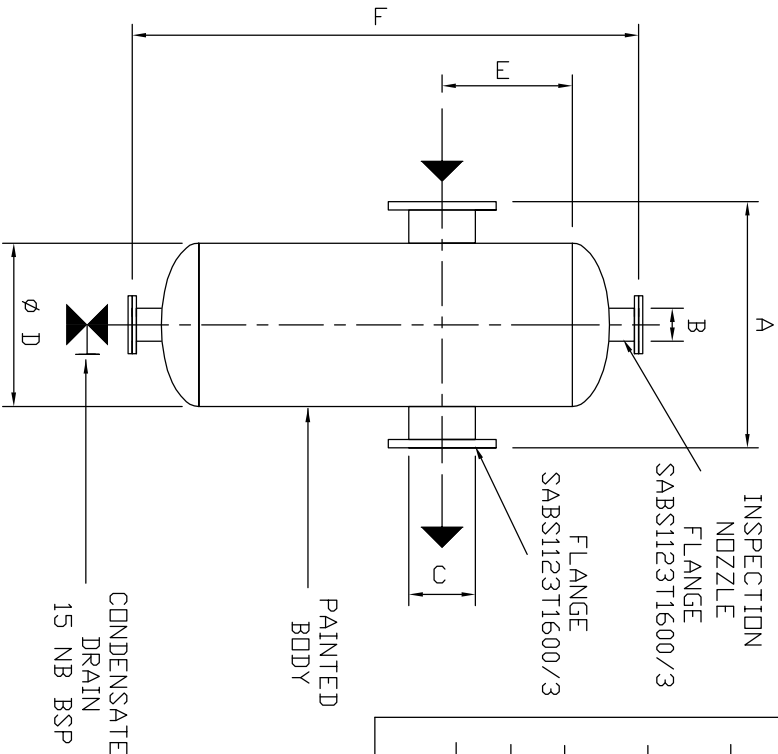


MODEL TNS40-8 TD



MODEL TNS63-10 TD

- THREE STAGE COLLECTION OF CONDENSATE
- FIRST STAGE IS COMBINATION OF IMPACT AND CENTRIFUGAL SEPARATION
- SECOND STAGE IS INERTIAL SEPARATION AS RESULT OF SHARP DIRECTIONAL CHANGE
- THIRD STAGE IS SEPARATION OF FINE PARTICALS IN A SELF CLEANING DEMISTER SECTION
- LARGE CAPACITY SUMP FOR COLLECTION OF CONDENSATE LONG DRAINING CYCLES
- OPTION OF 3 DIFFERENT AUTO DRAINS
- AVAILABLE ASK FOR DETAILS
- LARGER CAPACITIES AND HIGHER PRESSURES AVAILABLE ON REQUEST

S=SOCKET F=FLANGE
S=SOCKET F=FLANGE

MODEL NO	A	B	C	φ D	E	F	CAPACITY m ³ / min scfm
TNS5-2	160	15 NB S	25 NB S	114	116	1050	3.0
TNS10-4	172	15 NB S	40 NB S	141	124	1071	6.0
TNS15-5	238	15 NB S	50 NB S	168	130	1090	9.4
TNS40-8	305	20 NB S	80 NB S	220	145	1135	24
TNS63-10	392	50 NB S	100 NB F	273	157	1157	38
TNS142-15	626	100 NB F	150 NB F	406	184	1380	85
TNS252-20	744	100 NB F	200 NB F	508	210	1457	151
TNS393-25	851	100 NB F	250 NB F	609	236	1535	236
TNS565-30	1068	100 NB F	300 NB F	812	262	1637	339

- Notes
1. DESIGN CODE : RSA / CIF-81/2001/A01K ASME 8)
 2. DESIGN PRESSURE : 1000 kPa
 3. TEST PRESSURE : 1500 kPa
 4. WORKING PRESSURE : 700 kPa
 5. OPERATING TEMP. : 40 ° C

T E C H N I C A L D R A W I N G

TITLE: TNS RANGE OF SEPARATORS / CONDENSATE TRAPS

DESIGNED	SIGNED	DATE	SCALE	DRAWING No.:
		1/8/02	1:1	TNSO1
CHECKED	APPROVED			